

**Join in lively conversations
on topics that include:**

- Improving the office environment
- Managing employees
- Electronic Medical Records
- HIPAA Regulations
- Insurance Reimbursements
- Etc.

Members of the Kane County Medical Managers (KCMM) group are committed to sharing valuable information with one another in order to support one another in the important work of managing successful medical practices.

Meetings are held at Oscar Swan Country Inn in Geneva, IL throughout the year. The meetings are informal, informative and fun. A delicious lunch is always served in a beautiful setting and is enjoyed with great conversation.



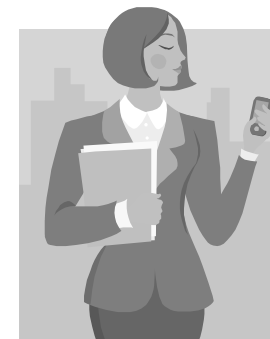
**Call the Kane County Medical Society
office for more information.
(630) 584-6129 or email us at sue@kcmsdocs.org**

**Kane County Medical Society
2320 Dean St., Suite 106
St. Charles, IL 60175**

**BECOME A MEMBER OF THE
KANE COUNTY MEDICAL MANAGERS
TODAY**

**How can
KCMM
help your
practice?**

**Together we learn. Together
we succeed. You don't have to
do it alone.**



**Call the Kane County Medical Society at
(630) 584-6129 or
email: sue@kcmsdocs.org**

Benefits to joining the Kane County Medical Managers

Quarterly lunch meetings provide managers with **valuable information** to support the management of their practice. Sharing ideas with other medical manager staff helps gain insight into the challenges of the industry.

Personal attention is given to your concerns.

KCMM managers have a wide variety of experience from decades to months and everything in between. Members are always available to answer your questions or to listen to a concern.

Communication is an important part of being a member. KCMM Members communicate between meetings as questions or concerns arise and are vetted through the KCMM community via email.

Benefits for your Practice when your physician is a member of the Kane County Medical Society:

Access to the ISMS Practice Managers' Network which includes a myriad of resources for your patients and practice on topics such as Electronic Health Records Management, Financial Audit, Medicare, Medicaid, Immunization and Vaccinations, Licensure and Credentialing, etc.

Access to all KCMS resources such as discounts on educational events, disability insurance, etc.

Benefits (for YOU and YOUR practice) when your physician belongs to the Illinois State Medical Society

Medical Legal Resources

- Members only access to legal counsel
- Members only free access to online medical library: general office documents available (HIPAA, patient discharge letter, etc), medical practice and contracting resources ("before you sign...", record retention, etc.) and medical legal guidelines.
- Health Policy Research and Member Advocacy
- Medical litigation reform
- Medical legal issues
- No-pay, slow pay, overpay and payment recall situations
- Billing, coding and enrollment processes
- Medicare and Medicaid questions
- Audit, peer review and quality assurance issues
- Member only services to improve the business side of your practice

Legislative Advocacy

ISMS lobbying team is the leading state health care advocate
Monitor and improve the regulatory processes;
Influence legislative and regulatory change.

Member Benefit Programs

(Call ISMS for information on these benefit programs (1-800-782-4767, ext. 1470))

The Kane County Medical Managers (KCMM) group provides an opportunity for practice managers to network and discuss important matters with other practice managers on issues that pertain to office management and practice administration. KCMM is open to all medical managers and anyone in a medical practice that would benefit from this group. One annual fee covers the cost of each meeting. Annual Dues: **\$75** for managers with a KCMS Member physician; **\$125** for managers of a non-KCMS member physician office.

Name

Position

Practice Name

Address

Email

Phone

Office Fax

Method of Payment

Check

MasterCard

Visa

American Express

Credit Card #

Exp. date

V-Code

Signature

**BECOME A MEMBER OF THE
KANE COUNTY MEDICAL MANAGERS TODAY**

Kane County Medical Society
2320 Dean St., Suite 106
St. Charles, IL 60175

Phone: 630-584-6129

Fax: 630-584-6703

Email: sue@kcmsdocs.org